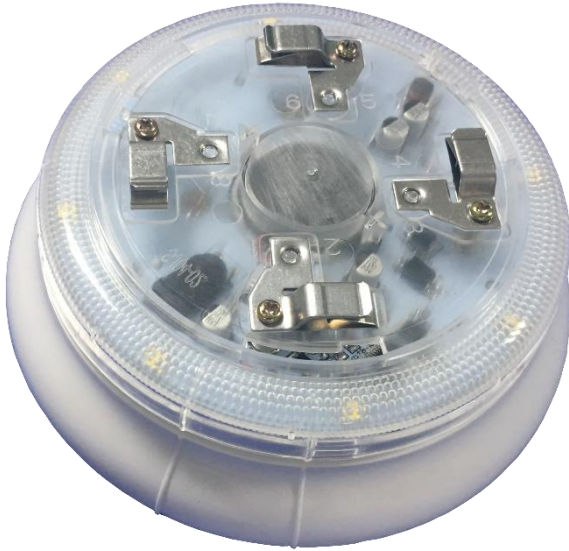


TX7302

Addressable Sounder Strobe Base



Feature and Benefits

- EN54-3 compliance
- Built-in MCU processor and digital addressing
- 17 tones Programmable sound output
- Encoding modes such as Single-encoding Mode, Dual-encoding Mode 1 and Dual-encoding Mode 2
- Programmable Evacuate or Pre-alarm/Evacuate signal
- 8 highlights LED status cluster
- Be started directly by a detector
- Onsite adjustable parameters
- Loop power input
- Aesthetically pleasing design
- Universal mounting with fix base for simple installation

Overview

The TX7302 Addressable Flashing Beacon Base is an alarm warning device used to notify persons in the vicinity of the occurrence fire emergency in order the person to take appropriate measures. The unit adopt multi-application device starting from the types, parameters and wiring layout in single unit. The TX7302 Addressable Flashing Beacon Base is powered by the communication bus. The TX7302 can change into different encoding modes such as Single-encoding Mode, Dual-encoding Mode 1 and Dual-encoding Mode 2 using a programming tool. And it has different starting modes such as started by a detector, a controller or other front-end linkage. In addition, the alarm tone can be configured according to the requirement from 17 different tones.

The unit manufactured base on the requirement of EN 54 part 3, European Standard. The unit is aesthetically pleasing with unobtrusive design that will complement modern building designs and its plug-in type assemblies make installation and maintenance more convenient to the installer. The unit is compatible to the TX7004 Analogue Intelligent Fire Alarm Control Panel, produced by single manufacture T&A, to avoid addressable communication compatibility problem.



Technical Specification

Compliance
Listed

Power Rating

Input Voltage
Current Consumption

Sounder Strobe Base

Protocol/Addressing
Address Sequence

Strobe

Base

Material / Colour

Dimension / Height

Weight

Class

Operating Temperature

Ingress Protection Rating

Humidity

EN54-3

Pending

Loop Power: 24VDC [16V to 28V]

Standby: $\leq 0.8\text{mA}$, Alarm: $\leq 5\text{mA}$

T&A, Value range from 1 to 254

Single-encoding Mode: Alarm

Dual-encoding Mode 1: 1st Alarm / 2nd Warning

Dual-encoding Mode 2: 1st Warning / 2nd Alarm

8 highlights LED

TX7980 Detector Base (Excluded)

ABS / White glossy finishing

Diameter 140mm / 59.1mm (with a cover)

198g (with a cover)/180g (without a cover)

Type A, Indoors

-10°C to +55°C

IP30

0 to 95% Relative Humidity, Non condensing

Sounder and Wiring Details



Terminal Description

- | | |
|---|----------------------|
| 1 | Signal In (+) |
| 2 | Signal Out (+) |
| 3 | Remote Indicator (+) |
| 4 | Remote Indicator (+) |
| 5 | Signal In (-) |
| 6 | Signal Out (-) |
| 7 | Remote Indicator (-) |
| 8 | Remote Indicator (-) |

